

Riduzione concentrica a saldare lunga

Normativa: CLAMP BS

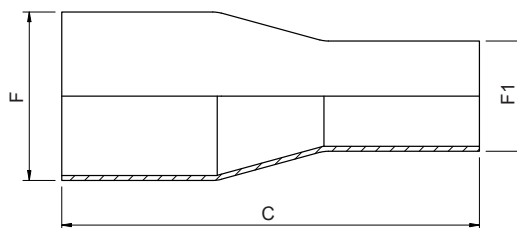
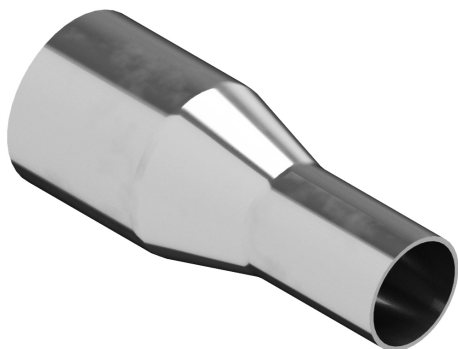


Fig. XC501.11

| Codice | DN (inch) | DN ₁ (inch) | F (mm) | F ₁ (mm) | C (mm) | spessore (mm) |
|--------------------|--------------|---------------------------|-----------|------------------------|-----------|------------------|
| XC501.11020015.316 | 3/4" | 1/2" | 19.05 | 12.7 | 53.975 | 1.65 |
| XC501.11025015.316 | 1" | 1/2" | 25.4 | 12.7 | 63.5 | 1.65 |
| XC501.11025020.316 | 1" | 3/4" | 25.4 | 19.05 | 53.975 | 1.65 |
| XC501.11040020.316 | 1" 1/2 | 3/4" | 38.1 | 19.05 | 76.2 | 1.65 |
| XC501.11040025.316 | 1" 1/2 | 1" | 38.1 | 25.4 | 63.5 | 1.65 |
| XC501.11050025.316 | 2" | 1" | 50.8 | 25.4 | 85.725 | 1.65 |
| XC501.11050040.316 | 2" | 1" 1/2 | 50.8 | 38.1 | 63.25 | 1.65 |
| XC501.11065040.316 | 2" 1/2 | 1" 1/2 | 63.5 | 38.1 | 85.725 | 1.65 |
| XC501.11065050.316 | 2" 1/2 | 2" | 63.5 | 50.8 | 63.5 | 1.65 |
| XC501.11080040.316 | 3" | 1" 1/2 | 76.2 | 37.1 | 107.95 | 2.11 |
| XC501.11080050.316 | 3" | 2" | 76.2 | 50.8 | 85.725 | 2.11 |
| XC501.11080065.316 | 3" | 2" 1/2 | 76.2 | 63.5 | 66.675 | 2.11 |
| XC501.11100050.316 | 4" | 2" | 101.6 | 50.8 | 130.175 | 2.11 |
| XC501.11100065.316 | 4" | 2" 1/2 | 101.6 | 63.5 | 107.95 | 2.11 |
| XC501.11100080.316 | 4" | 3" | 101.6 | 76.1 | 98.425 | 2.11 |
| XC501.11150080.316 | 6" | 3" | 152.4 | 76.1 | 184.15 | 2.77 |
| XC501.11150100.316 | 6" | 4" | 152.4 | 101.6 | 142.875 | 2.77 |