

Girella cieca DIN con catenella e guarnizione

Normativa: DIN 11851

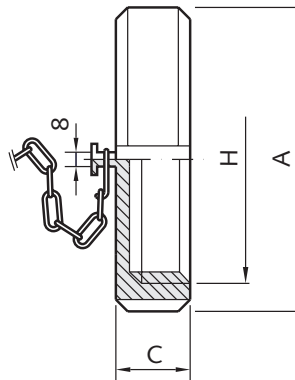
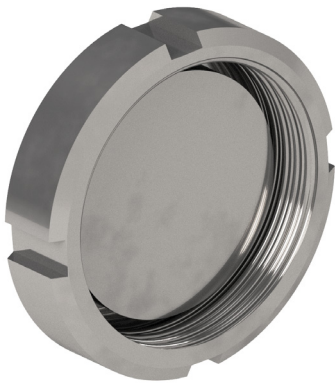


Fig. XD462.21

Codice	DN	H (mm)	A (mm)	C (mm)
XD462.21025.304	25	52	63	21
XD462.21032.304	32	58	70	21
XD462.21040.304	40	65	78	21
XD462.21050.304	50	75	92	22
XD462.21060.304	60	85	99	22
XD462.21065.304	65	95	112	25
XD462.21080.304	80	110	127	29
XD462.21100.304	100	130	148	31
XD462.21125.304	125	160	178	34

Materiale	Sigla (***)
Inox AISI 304	304