

# 01 QUICK CONNECT COUPLINGS RACCORDS RAPIDES

## CAMLOCK

### RACCORDS À CAMES



CHEMICALS &  
PHARMACEUTICALS



OIL & GAS

## STANDARDS NORME

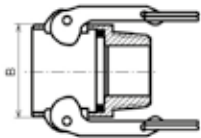
MIL-A-A59326A, MIL-C 27487, except 1/2", 5" and 8". UTS range only: NF EN 14420-7.

MIL-A-A59326A, MIL-C 27487, sauf pour 1/2", 5" et 8". Gamme UTS uniquement : NF EN 14420-7.

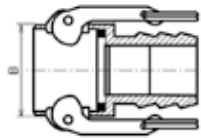
## SIZE DIMENSIONS

From DN 1/2" to 8". Du diamètre 1/2" à 8".

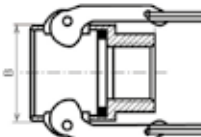
### COUPLER COUPLEUR



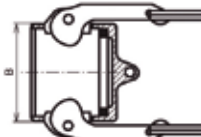
**TYPE B**  
Male Mâle



**TYPE C** Hose shank  
Cranté à collerette

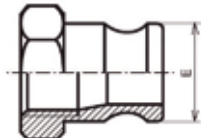


**TYPE D**  
Female Femelle

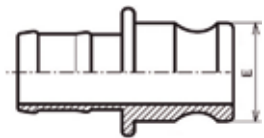


**TYPE DC**  
Dust plug

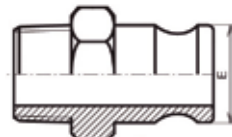
### ADAPTER APAPTEUR



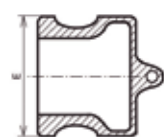
**TYPE A**  
Female Femelle



**TYPE E** Hose shank  
Cranté à collerette



**TYPE F**  
Male Mâle



**TYPE DP**  
Dust plug

DN mm	DN inches pouces	B
15	1/2"	32
20	3/4"	42
25	1"	46
32	1"1/2	56
40	1"1/4	64
50	2"	76
65	2"1/2	87
80	3"	103
100	4"	132
125	5"	162
150	6"	194

DN mm	DN mm	E
15	1/2"	23,8
20	3/4"	32,1
25	1"	36,7
32	1"1/2	45,5
40	1"1/4	53,4
50	2"	63
65	2"1/2	75,8
80	3"	91,5
100	4"	119,5
125	5"	146
150	6"	175,9

# 01 QUICK CONNECT COUPLINGS RACCORDS RAPIDES

## CAMLOCK

## RACCORDS À CAMES

### WORKING PRESSURE PRESSION DE SERVICE

Ø	1/2"	3/4"	1"	1"1/4	1"1/2	2"	2"1/2	3"	4"	5"	6"	8"
<b>AL</b>	16	16	16	16	16	16	16	16	16	5	5	5
<b>SS</b>	16	16	16	16	16	16	16	16	16	5	5	-
<b>BR</b>	16	16	16	16	16	16	16	16	16	-	-	-
<b>PP</b>	6	6	6	6	6	6	6	6	6	-	-	-

### TEMPERATURE TEMPÉRATURE

- **AL, SS, BR/BRZ** -20°C/+65°C
- **PP** 0°C/+30°C

### COUPLING MATERIALS MATIÈRE DES RACCORDS

- **AL** Aluminium Aluminium
- **SS** Stainless steel Inox
- **BR/BRZ** Brass or bronze Laiton ou bronze
- **PP** Polypropylene Polypropylène

### THREAD FILETAGE

**Type B coupler and type F adapter: thread BSPT following EN 1026-1.**

**Type D coupler and type A adapter: thread BSPP following EN ISO 228-1.**

Coupleur type B et adaptateur type F : filetage BSPT suivant EN 1026-1.

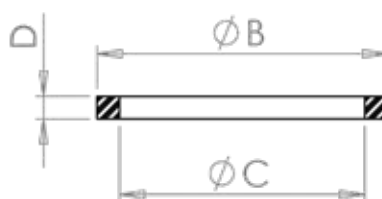
Coupleur type D et adaptateur type A : filetage BSPP suivant EN ISO 228-1.

### GASKETS JOINTS

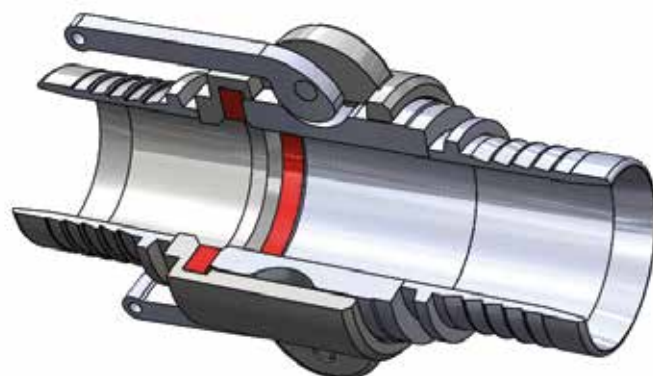
**Materials Matières**

**EPDM, NBR, FPM, SIL, PTFE, CSM**

DN	DN	Ø B	Ø C	D
20	3/4"	35	22	5.5
25	1"	40	27	6.4
32	1"1/4	50	35	6.4
40	1"1/2	56	41	6.4
50	2"	67	51	6.4
65	2"1/2	80	60	6.4
80	3"	95	76	6.4
100	4"	124	102	6.4



### CONNECTION PRINCIPLE PRINCIPE DE RACCORDEMENT



## CAMLOCK RACCORDS À CAMES



**TYPE C  
COUPLER  
UTS SHANK**  
COUPLEUR TYPE C  
DOUILLE UTS



DN coupl. Diam. raccord	DN shank Diam. douille	SS 316 FPM green gasket Joint FPM vert	
20	3/4"	19,2	<b>5105269</b>
25	1"	25,2	<b>5103409</b>
32	1"1/4	32,5	<b>5105270</b>
40	1"1/2	38,5	<b>5103410</b>
50	2"	50,5	<b>5103411</b>
65	2"1/2	63,5	<b>5103412</b>
80	3"	75,5	<b>5103413</b>
100	4"	100,6	<b>5103414</b>



**TYPE E  
ADAPTER  
UTS SHANK**  
ADAPTEUR TYPE E  
DOUILLE UTS



DN coupl. Diam. raccord	DN shank Diam. douille	SS 316	
20	3/4"	19,2	<b>5105267</b>
25	1"	25,2	<b>5103397</b>
32	1"1/4	32,5	<b>5105268</b>
40	1"1/2	38,5	<b>5103398</b>
50	2"	50,5	<b>5103399</b>
65	2"1/2	63,5	<b>5103400</b>
80	3"	75,5	<b>5103401</b>
100	4"	100,6	<b>5103402</b>

## CAMLOCK RACCORDS À CAMES



**SECURE  
TYPE C  
COUPLER  
WITH SMOOTH SHANK**  
COUPLEUR TYPE C  
DOUILLE LISSE  
SÉCURISÉ



DN coupl. Diam. raccord	DN shank Diam. douille	SS 316 NBR black gasket Joint NBR noir
20	3/4"	19 SAFDL19
25	1"	25 SAFDL25
32	1"1/4	32 SAFDL32
40	1"1/2	38 SAFDL40
50	2"	50 SAFDL50
65	2"1/2	63 SAFDL65
80	3"	75 SAFDL80
100	4"	100 SAFDL100



**TYPE C  
COUPLER  
GROOVED HOSE SHANK**  
COUPLEUR TYPE C  
A GORGE



DN coupl. Diam. raccord	DN shank Diam. douille	AL NBR black gasket Joint NBR noir	SS 316 NBR black gasket Joint NBR noir	BR NBR black gasket Joint NBR noir	PP NBR black gasket Joint NBR noir
15	1/2"	13 5101672	0117430	5102103	5102187
20	3/4"	19 5101673	0117431	5102104	5102188
25	1"	25 5101674	-	5102105	5102189
32	1"1/4	32 5101675	0117433	5102106	5102190
40	1"1/2	38 5101676	0117434	5102107	5102191
50	2"	50 5101677	0117435	5102108	5102197
65	2"1/2	63 5101678	0117436	5102109	-
80	3"	75 5101679	0117437	5102110	5102193
100	4"	100 5101680	0117438	5102111	5102194
125	5"	125 5101681	5101585	-	-
150	6"	150 5101682	5101394	-	-
200	8"	200 5102409	-	-	-

## CAMLOCK RACCORDS À CAMES



**TYPE E  
ADAPTER  
GROOVED HOSE SHANK**  
ADAPTEUR TYPE E  
A GORGE



DN coupl. Diam. raccord		DN shank Diam. douille	AL	SS 316	BR	PP
15	1/2"	13	5101694	0117443	5102125	-
20	3/4"	13	-	-	-	5102203
20	3/4"	19	5101695	0117444	5102126	5102204
25	1"	25	5101696	0117445	5102127	5102205
32	1"1/4	32	5101697	0117446	5102128	-
40	1"1/2	32	-	-	-	5102206
40	1"1/2	38	5101698	0117447	5102129	5102207
50	2"	50	5101699	0117448	5102130	5102208
65	2"1/2	63	5101700	0117449	5102131	-
80	3"	75	5101701	0117450	5102132	5102209
100	4"	100	5101702	0117451	5102133	5102210
125	5"	125	5101703	5101586	-	-
150	6"	150	5101704	5101395	-	-



**TYPE D  
COUPLER**  
COUPLEUR TYPE D



DN coupl. Diam. raccord		BSPP Thread Filetage	AL <i>NBR black gasket</i> <i>Joint NBR noir</i>	SS 316 <i>NBR black gasket</i> <i>Joint NBR noir</i>	BR <i>NBR black gasket</i> <i>Joint NBR noir</i>	PP <i>NBR black gasket</i> <i>Joint NBR noir</i>
15	1/2"	1/2"	5101683	5101416	5102114	5102195
20	3/4"	3/4"	5101684	5101417	5102115	5102196
25	1"	1"	5101685	5101418	5102116	5102237
32	1"1/4	1"1/4	5101686	5101419	5102117	5105292
40	1"1/2	1"1/4	-	-	-	5102198
40	1"1/2	1"1/2	5101687	5101420	5102118	5102199
50	2"	2"	5101688	5101421	5102119	5102200
65	2"1/2	2"1/2	5101689	5101422	5102120	-
80	3"	3"	5101690	5101423	5102121	5102201
100	4"	4"	5101691	5101424	5102122	5102202
125	5"	5"	5101692	5101589	5102123	-
150	6"	6"	5101693	5101425	-	-

## CAMLOCK RACCORDS À CAMES



**SECURE  
TYPE D  
COUPLER**  
COUPLEUR TYPE D  
SÉCURISÉ



DN coupl. Diam. raccord	BSPP Thread Filetage	SS 316 NBR black gasket Joint NBR noir
15	1/2"	SAFD15
20	3/4"	SAFD19
25	1"	SAFD25
32	1"1/4	SAFD32
40	1"1/2	SAFD40
50	2"	SAFD50
65	2"1/2	SAFD65
80	3"	SAFD80
100	4"	SAFD100



**TYPE B  
COUPLER**  
COUPLEUR TYPE B



DN coupl. Diam. raccord	BSPT Thread Filetage	AL Black NBR gasket Joint NBR noir	SS 316 NBR black gasket Joint NBR noir	BR NBR black gasket Joint NBR noir	PP NBR black gasket Joint NBR noir
15	1/2"	5101661	5101426	5102092	-
20	3/4"	-	-	-	5102179
20	3/4"	5101662	5101427	5102093	5102235
25	1"	5101663	5101428	5102094	5102181
32	1"1/4	5101664	5101429	5102095	-
40	1"1/2	-	-	-	5102182
40	1"1/2	5101665	5101430	5102096	5102183
50	2"	5101666	5101431	5102097	5102184
65	2"1/2	5101667	5101432	5102098	-
80	3"	5101668	5101433	5102099	5102185
100	4"	5101669	5101434	5102100	5102186
125	5"	5101670	5101590	-	-
150	6"	5101671	5101435	-	-

## CAMLOCK RACCORDS À CAMES



**SECURE  
TYPE B  
COUPLER**  
COUPLEUR TYPE B  
SÉCURISÉ



DN coupl. Diam. raccord	BSPT Thread Filetage	SS 316 NBR black gasket Joint NBR noir
20	3/4"	SAFB19
25	1"	SAFB25
50	2"	SAFB50



**COUPLER  
FOR WELDING BW**  
COUPLEUR À SOUDER BW



DN coupl. Diam. raccord	DN weld. Diam. à souder	SS 316 NBR black gasket Joint NBR noir
15	1/2"	5102020
20	3/4"	5102021
25	1"	5102022
32	1"1/4	5102023
40	1"1/2	5102024
50	2"	5102025
65	2"1/2	5102026
80	3"	5102027
100	4"	5102028
125	5"	5106996



**SECURE  
COUPLER  
FOR WELDING BW**  
COUPLEUR À SOUDER BW  
SÉCURISÉ



DN coupl. Diam. raccord	DN weld. Diam. à souder	SS 316 NBR black gasket Joint NBR noir
20	3/4"	SAFBW19
25	1"	SAFBW25
32	1"1/4	SAFBW32
40	1"1/2	SAFBW40
50	2"	SAFBW50
65	2"1/2	SAFBW65
80	3"	SAFBW80
100	4"	SAFBW100

## CAMLOCK RACCORDS À CAMES



### TYPE DC COUPLER COUPLEUR TYPE DC



DN coupl. Diam. raccord		AL NBR black gasket Joint NBR noir	SS 316 NBR black gasket Joint NBR noir	BR NBR black gasket Joint NBR noir	PP NBR black gasket Joint NBR noir
15	1/2"	5101716	5101446	5102147	5102227
20	3/4"	5101717	5101447	5102148	5102228
25	1"	5101718	5101448	5102149	5102229
32	1"1/4	5101719	5101449	5102150	-
40	1"1/2	5101720	5101450	5102151	5102231
50	2"	5101721	5101451	5102152	5102232
65	2"1/2	5101722	5101452	5102153	
80	3"	5101723	5101453	5102154	5102233
100	4"	5101724	5101454	5102155	5102236
125	5"	5101725	5101592	-	-
150	6"	5101726	5101455	-	-



### SECURE TYPE DC COUPLER COUPLEUR TYPE DC SÉCURISÉ



DN coupl. Diam. raccord		SS 316 NBR black gasket Joint NBR noir
20	3/4"	SAFDC19
25	1"	SAFDC25
32	1"1/4	SAFDC32
40	1"1/2	SAFDC40
50	2"	SAFDC50
65	2"1/2	SAFDC65
80	3"	SAFDC80
100	4"	SAFDC100



## CAMLOCK RACCORDS À CAMES



**TYPE A  
ADAPTER**  
ADAPTEUR TYPE A



DN coupl. Diam. raccord	BSPP Thread Filetage	AL	SS 316	BR	PP	
15	1/2"	1/2"	5101650	5101396	5102081	-
20	3/4"	1/2"	-	-	-	5102171
20	3/4"	3/4"	5101651	5101397	5102082	5102172
25	1"	1"	5101652	5101398	5102083	5102173
32	1"1/4	1"1/4	5101653	5101399	5102084	-
40	1"1/2	1"1/2	5101654	5101400	5102085	5102175
50	2"	2"	5101655	5101401	5102086	5102176
65	2"1/2	2"1/2	5101656	5101402	5102087	-
80	3"	3"	5101657	5101403	5102088	5102177
100	4"	4"	5101658	5101404	5102089	5102178
125	5"	5"	5101659	5101587	5102090	-
150	6"	6"	5101660	5101405	-	-



**TYPE F  
ADAPTER**  
ADAPTEUR TYPE F



DN coupl. Diam. raccord	BSPT Thread Filetage	AL	SS 316	BR	PP	
15	1/2"	1/2"	5101705	5101406	5102136	5102211
20	3/4"	3/4"	5101706	5101407	5102137	5102212
25	1"	1"	5101707	5101408	5102138	5102213
32	1"1/4	1"1/4	5101708	5101409	5102139	-
40	1"1/2	1"1/4	-	-	-	5102214
40	1"1/2	1"1/2	5101709	5101410	5102140	5102215
50	2"	2"	5101710	5101411	5102141	5102216
65	2"1/2	2"1/2	5101711	5101412	5102142	-
80	3"	3"	5101712	5101413	5102143	5102217
100	4"	4"	5101713	5101414	5102144	5102218
125	5"	5"	5101714	5101588	-	-
150	6"	6"	5101715	5101415	-	-

## CAMLOCK RACCORDS À CAMES



**ADAPTER  
FOR WELDING BW**  
ADAPTEUR À SOUDER BW



DN coupl. Diam. raccord		DN weld. Diam. à souder	SS 316
15	1/2"	21,3	5102011
20	3/4"	26,9	5102012
25	1"	33,7	5102013
32	1"1/4	42,4	5102014
40	1"1/2	48,3	5102015
50	2"	60,3	5102016
65	2"1/2	76,1	5102017
80	3"	88,9	5102018
100	4"	114,3	5102019
125	5"	139,7	5106997



**TYPE DP  
ADAPTER**  
ADAPTEUR TYPE DP



DN coupl. Diam. raccord		AL	SS 316	BR	PP
15	1/2"	5101727	5101436	5102158	-
20	3/4"	5101728	5101437	5102159	5102220
25	1"	5101729	5101438	5102160	5102221
32	1"1/4	5101730	5101439	5102161	-
40	1"1/2	5101731	5101440	5102162	5102223
50	2"	5101732	5101441	5102163	5102238
65	2"1/2	5101733	5101442	5102164	-
80	3"	5101734	5101443	5102165	5102225
100	4"	5101735	5101444	5102166	5102226
125	5"	5101736	5101591	-	-
150	6"	5101737	5101445	-	-

## CAMLOCK RACCORDS À CAMES

### PIN EPINGLE



DN coupl. Diam. raccord	DN coupl. Diam. raccord	SS 316
15 - 32	1/2" - 1"1/4	5105003
40 - 150	1"1/2 - 6"	5105004

### KIT HANDLE/PING/RING KIT GOUPILLE/ANNEAU/AXE



DN coupl. Diam. raccord	DN coupl. Diam. raccord	SS 316
15 - 20	1/2" - 3/4"	5102243
25	1"	5102244
32 - 65	1"1/4 - 2"1/2	5102245
80 - 125	3" - 5"	5102246
150	6"	5102247

### CAM STRAP ATTACHE SCRATCH



DN coupl. Diam. raccord	DN coupl. Diam. raccord	
15 - 32	1/2" - 1"1/4	5105431
40 - 100	1"1/2 - 4"	5105432
125 - 150	5" - 6"	5104902

## CAMLOCK RACCORDS À CAMES

### GASKET JOINT



DN coupl. Diam. raccord		EPDM White Blanc	NBR Black Noir	FEP/SIL Red Rouge
15	1/2"	5102281	5101456	5101494
20	3/4"	5102282	5101457	5101495
25	1"	5102283	5101458	5101496
32	1"1/4	5102284	5101459	5101497
40	1"1/2	5102285	5101460	5101498
50	2"	5102286	5101461	5101499
65	2"1/2	5102287	5101462	5101500
80	3"	5102288	5101463	5101501
100	4"	5102289	5101464	5101502
125	5"	5102290	5102000	-
150	6"	5102291	5101465	-

### GASKET JOINT



DN coupl. Diam. raccord		FPM Green Noir	FPM Red Rouge	FPM/PTFE
15	1/2"	5101466	-	5101485
20	3/4"	5101467	5107313	5101486
25	1"	5101468	5107312	5101487
32	1"1/4	5101469	-	5101488
40	1"1/2	5101470	5107314	5101489
50	2"	5101471	-	5101490
65	2"1/2	5101472	-	5101491
80	3"	5101473	-	5101492
100	4"	5101474	-	5101493
125	5"	5102280	-	-
150	6"	5101475	-	-